

# FOR SALE



## OFFICE CONDOMINIUMS KIHEI PACIFIC PLAZA

---

<b>LOCATION:</b>	1847 South Kihei Road, Kihei, Maui, Hawaii
<b>TMK:</b>	(2) 3-9-003-015 (portion of)
<b>DESCRIPTION:</b>	Multiple 1st & 2nd Floor Office Condos available for individual or multiple sale.

Suite No.	Tenant	Size	Price
101/107/108	Hawaii Dental Group	2,520	\$945,000
102	Sacred Center Tattoo	840	\$315,000
103/106	Health Associates	1680	\$630,000
201	Rutz Salon	1680	\$588,000
202	Vacant	1680	\$588,000
203	Vacant	1680	\$588,000
205	Sherry Coons DC	840	\$294,000

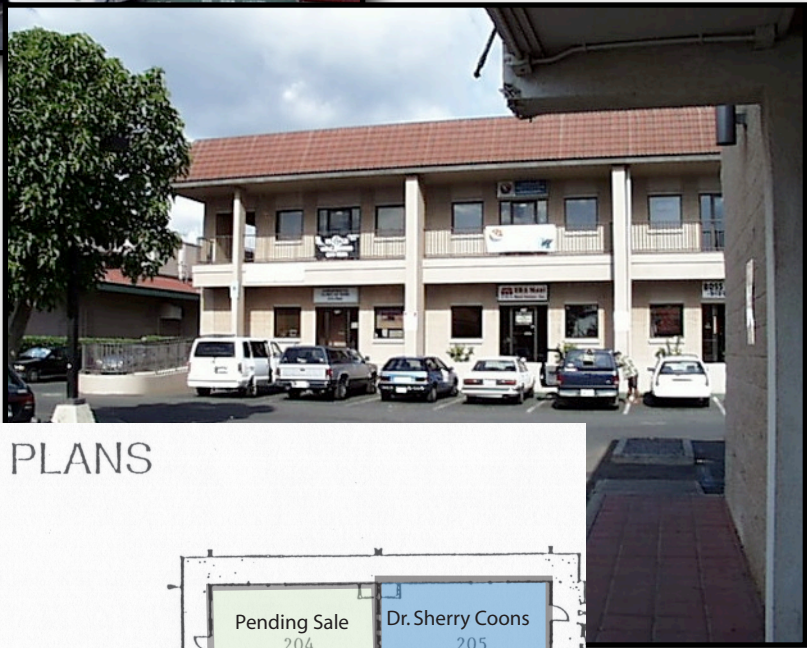
**FOR ADDITIONAL INFORMATION, PLEASE CONTACT**

**GREGORY L. SHEEHAN R (S)  
COMMERCIAL PROPERTIES OF MAUI  
244-2200**

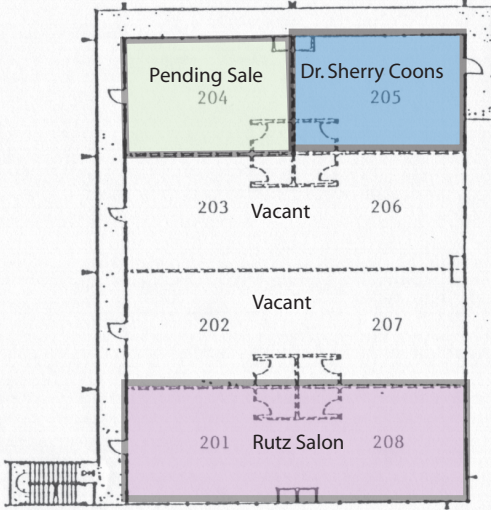
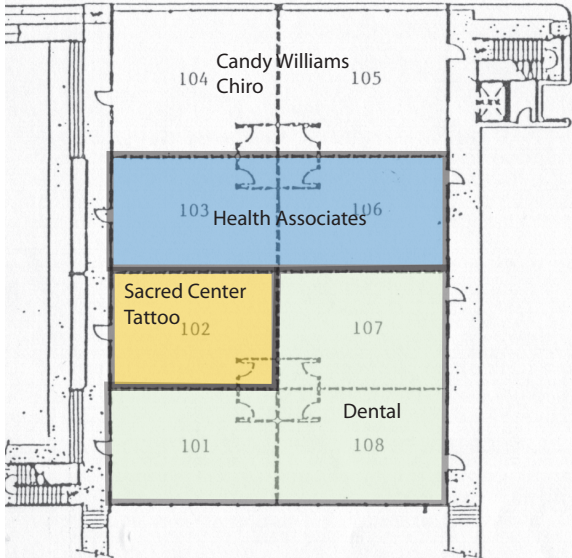
The information contained herein comes from sources deemed reliable, but no warranties or guarantees as to the accuracy of the information should be construed.



Commercial Properties  
of Maui LLC



### FLOOR PLANS



The information contained herein comes from sources deemed reliable, but no warranties or guarantees as to the accuracy of the information should be construed.