

**Wailuku Building For Sale
Commercial Kitchen with Office & Storage
Space and Second Floor Apartments
\$1,884,000 Fee Simple**



Lifefoods Building
2092 Vineyard Street
Wailuku, Maui, Hawaii

Exclusively offered For Sale by

GREG SHEEHAN, R (B) and GRANT E. HOWE, CCIM R(B)



**COMMERCIAL PROPERTIES
OF MAUI**

444 Hana Highway Suite C Kahului, HI 96732

(808)244-2200 OFFICE | (808)442-1195 FAX

www.mauibiz.com | gsheehan@mauibiz.com | ghowe@mauibiz.com



Lifefoods Building

2092 Vineyard Street



Wailuku, Maui, Hawaii

PRICE	\$1,884,000 FS
BUILDING AREA	5,958 SQ FT
LAND AREA	4,795 SQ FT
TMK	(2) 3-4-017-033
ZONING	Wailuku Redevelopment Area
PARKING	
REAL PROPERTY TAXES (2017)	\$4,047 per year
OPERATING EXPENSES:	

3% Commission to Cooperating Brokers.

The information contained herein comes from sources deemed reliable, but no warranties or guarantees as to the accuracy of the information should be construed.

SPACE DESCRIPTION
Ground floor is set up for commercial kitchen and retail take-out.

2nd floor apartment and offices.



COMMERCIAL PROPERTIES
OF MAUI

GREG SHEEHAN, R(B) AND GRANT E. HOWE, CCIM R(B)

444 Hana Highway #C Kahului, HI 96732 | (808)244-2200 OFFICE | (808)442-1195 FAX

www.mauibiz.com | gsheehan@maubiz.com | ghowe@mauibiz.com E-MAIL

Property Photos



The information contained herein comes from sources deemed reliable, but no warranties or guarantees as to the accuracy of the information should be construed.

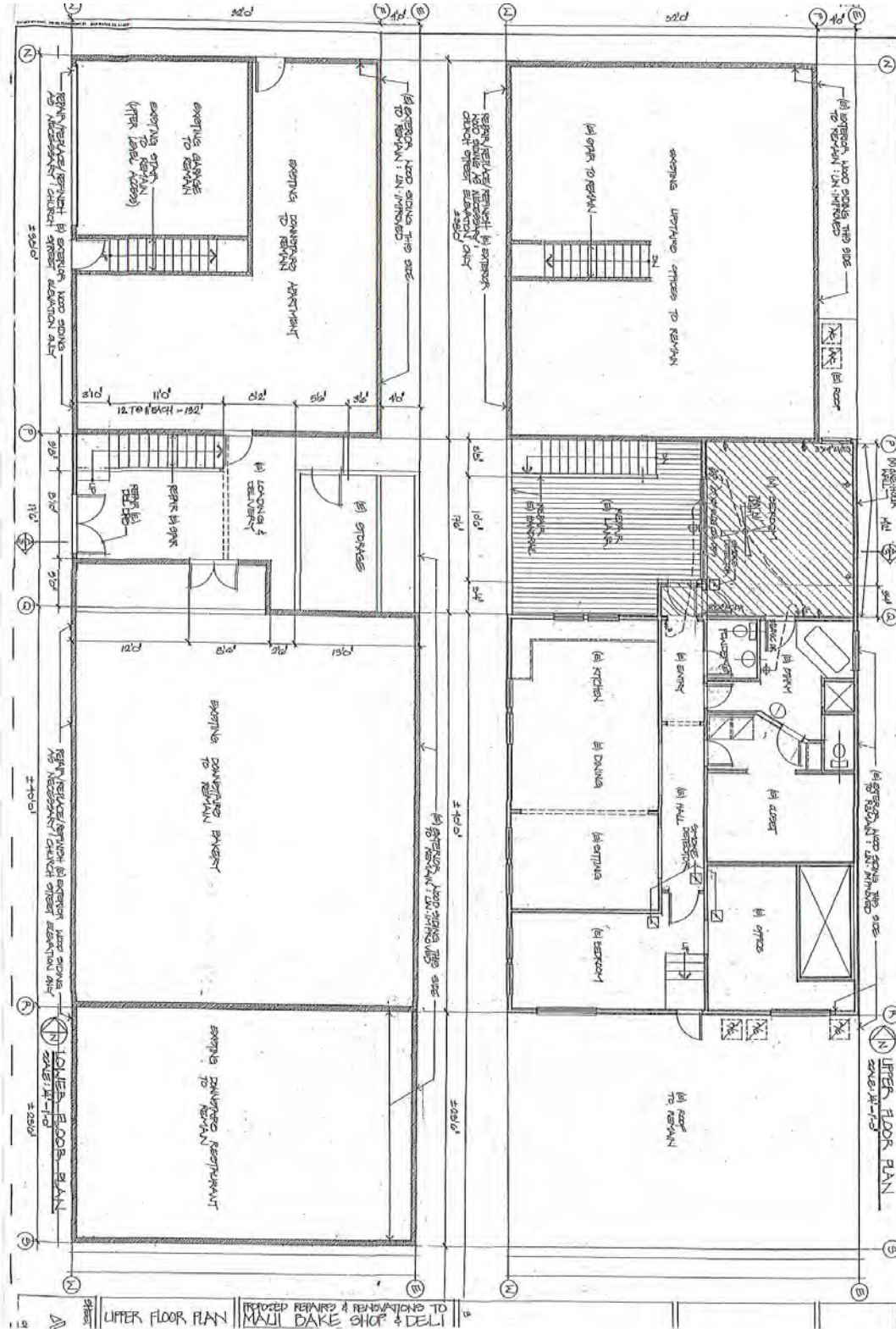
GREG SHEEHAN R(B) AND GRANT E. HOWE, CCIM R(B)

444 Hana Highway #C Kahului, HI 96732 | (808)244-2200 OFFICE | (808)442-1195 FAX

www.mauibiz.com | gsheehan@mauibiz.com | ghowe@mauibiz.com E-MAIL



Floor Plan



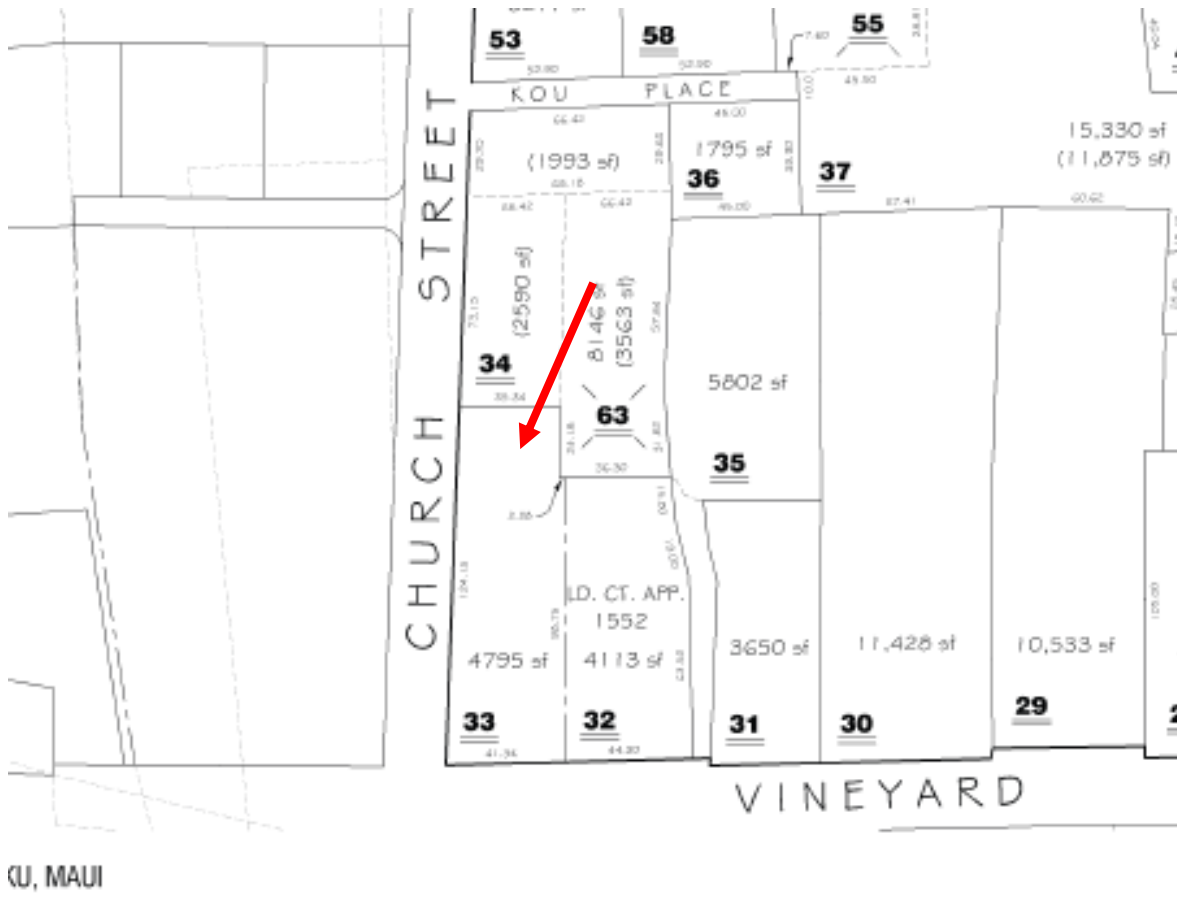
GREG SHEEHAN R(B) AND GRANT E. HOWE, CCIM R(B)

444 Hana Highway #C Kahului, HI 96732 | (808)244-2200 OFFICE | (808)442-1195 FAX

www.mauibiz.com | gsheehan@mauibiz.com | ghowe@mauibiz.com E-MAIL



Parcel Map



The information contained herein comes from sources deemed reliable, but no warranties or guarantees as to the accuracy of the information should be construed.

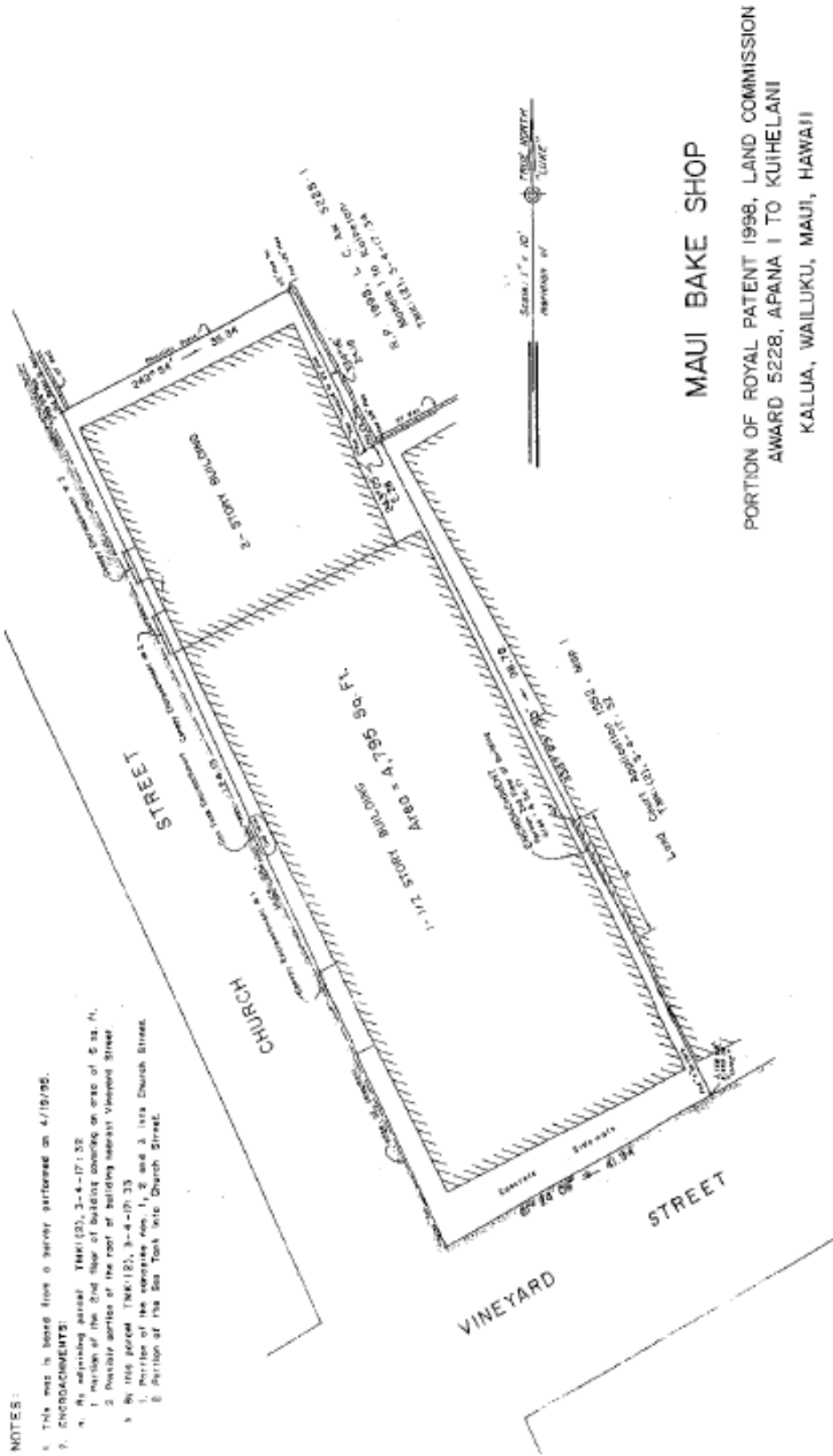
GREG SHEEHAN R(B) AND GRANT E. HOWE, CCIM R(B)

444 Hana Highway #C Kahului, HI 96732 | (808)244-2200 OFFICE | (808)442-1195 FAX

www.mauibiz.com | gsheehan@mauibiz.com | ghowe@mauibiz.com E-MAIL



Survey Map



NOTES:

1. This map is based on a survey performed on 4/19/95.
2. ENCROACHMENTS:
 - a. An adjoining parcel TNA(12), 3-4-17-32
 - b. A portion of the 2nd floor of building covering an area of 5 sq. ft.
 - c. Possible portion of the roof of building nearest Vineyard Street.
3. By 1958 parcel TNA(12), 3-4-17-32
4. Part of the corner nos. 1, 2 and 3, lots Church Street.
5. Portion of the 5th lot into Church Street.

This work was prepared by me
under my direct supervision
at KALUA, MAUI, HAWAII
on 4/19/95
I, *[Signature]*
Registered Land Surveyor
State of Hawaii Certificate No. 20001N