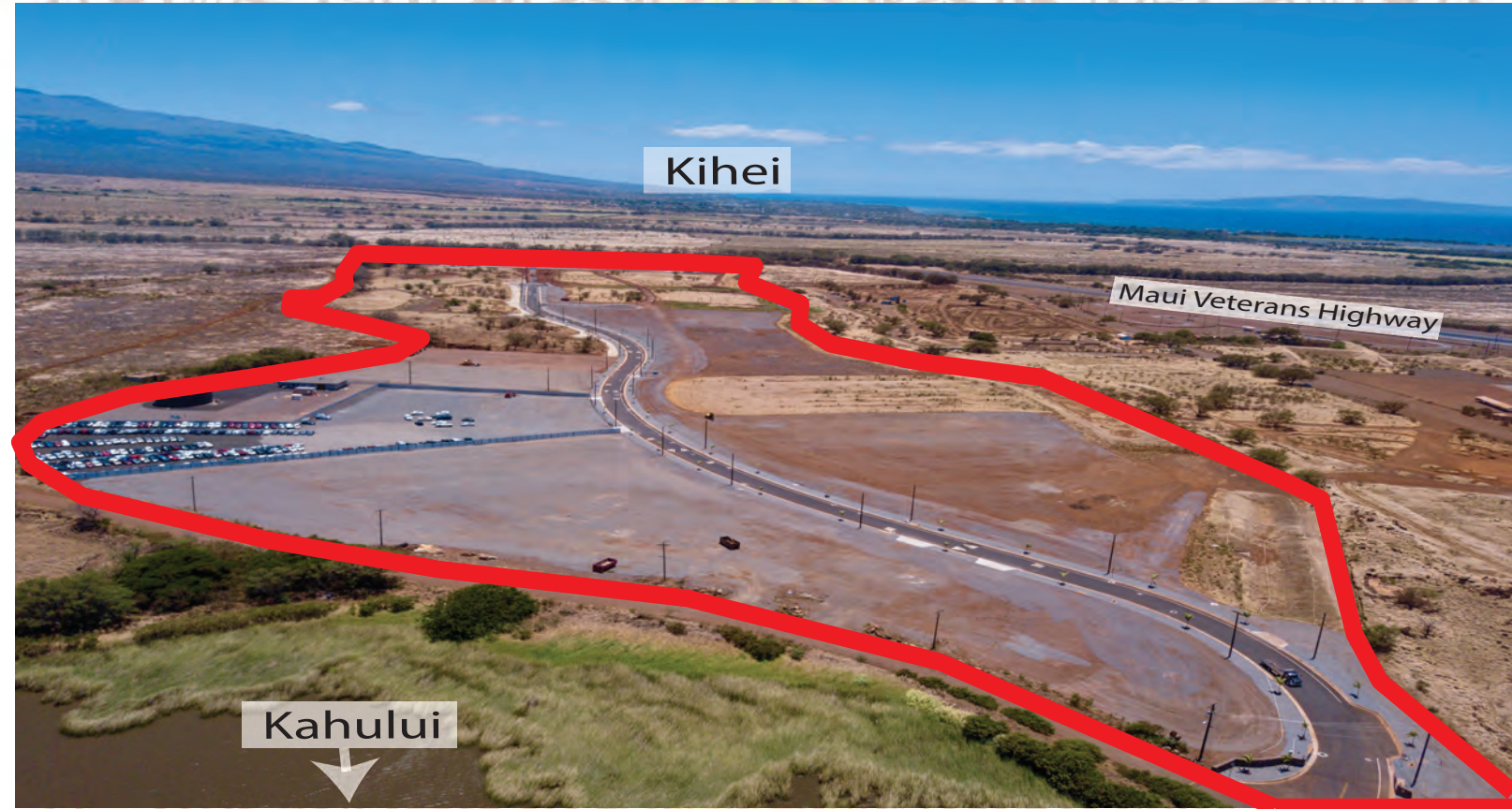


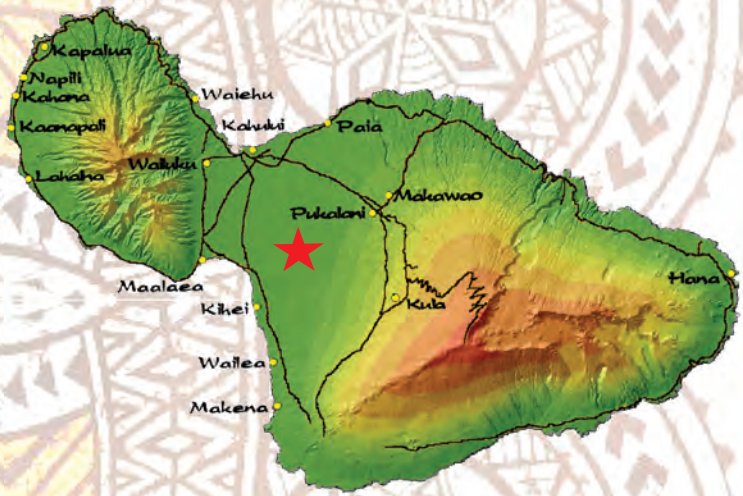
# Pulehunui

## INDUSTRIAL PARK



The 86-acre, 28 lot Pulehunui Heavy Industrial Park is Maui's first subdivision to offer the new County M3 Restricted Industrial zoning, which allows heavy industrial uses such as construction and lumber baseyards, manufacturing, recycling, stockpiling, crushing, and heavy equipment storage.

Pulehunui Industrial Park is centrally located on Maui Island making it an ideal site to serve the island's long-term public, business, commercial and industrial land use needs.



### M3 HEAVY INDUSTRIAL LOTS FOR SALE

[www.pulehunui.com](http://www.pulehunui.com)



COMMERCIAL PROPERTIES  
OF MAUI

808.244.2200

# Pulehunui

## INDUSTRIAL PARK

### WHAT IS M3 ZONING?

Passed in 2012, Chapter 19.25 of the Maui Code allows for those uses which include the manufacturing, processing, storage or treatment of goods from raw materials. The district is intended to include manufacturing and nuisance industries. General retail and office uses are specifically excluded from this district. Uses allowed without a County of Maui special use permit include asphalt and concrete manufacturing and storage, auto wrecking, recycling, rock crushing, and others. See [www.pulehunui.com](http://www.pulehunui.com) for a copy of the ordinance.



- Private water system
- Private wastewater system
- Master drainage system with drainage pipe stubbed to each lot
- Security gate at entrance
- Overhead electrical and communications allowing for flexibility of power needs
- Lot 2B & 2Y For Lease - \$0.15/SF NNN



**COMMERCIAL PROPERTIES**  
OF MAUI

**808.244.2200**

- Grey box: Sold
- Yellow box: For Sale
- Red box: For Lease

444 Hana Highway • Suite C • Kahului, HI 96732-2315 • [mauibiz.com](http://mauibiz.com)