

Park Plaza Office Condo

\$599,000 Fee Simple



1300 N. Holocono Street
Unit O
Kihei Maui Hawaii

Exclusively offered For Sale by

GRANT E. HOWE, CCIM R(B) AND MARK A. SCHUSTER, R(S)



COMMERCIAL PROPERTIES
OF MAUI

2145 Wells Street #105 Wailuku, HI 96793

(808)244-2200 OFFICE | (808)442-1195 FAX | www.mauibiz.com

ghowe@mauibiz.com | mschuster@mauibiz.com E-MAIL



Individual
Member

Park Plaza

1300 N. Hoopono Street, Unit O



Kihei, Maui, Hawaii

PRICE	\$599,000 FS
INTERIOR AREA	1,170 SQ FT
TMK	(2) 2-2-024-037
CPR	0015
ZONING	Kihei R&T
PARKING	Unassigned on-site
REAL PROPERTY TAXES	\$2,425.50 2015/2016
AOAO FEES	\$658.72 per month
ELECTRICITY	Separately Metered

SPACE DESCRIPTION
 Office Condo in Class A Building. Ground floor unit with separate entrance, spectacular ocean views, 6 private offices, upgraded kitchen, & professional conference room. Mahogany doors and mahogany & bamboo cabinetry, cork floors, marble countertops.

3% Commission to Cooperating Brokers.

The information contained herein comes from sources deemed reliable, but no warranties or guarantees as to the accuracy of the information should be construed.



COMMERCIAL PROPERTIES
OF MAUI

GRANT E. HOWE, CCIM R(B) and MARK A. SCHUSTER, R(S)

2145 Wells Street #105 Wailuku, HI 96793 | (808)244-2200 OFFICE | (808)442-1195 FAX

www.mauibiz.com | ghowe@mauibiz.com | mschuster@mauibiz.com E-MAIL

Property Photos



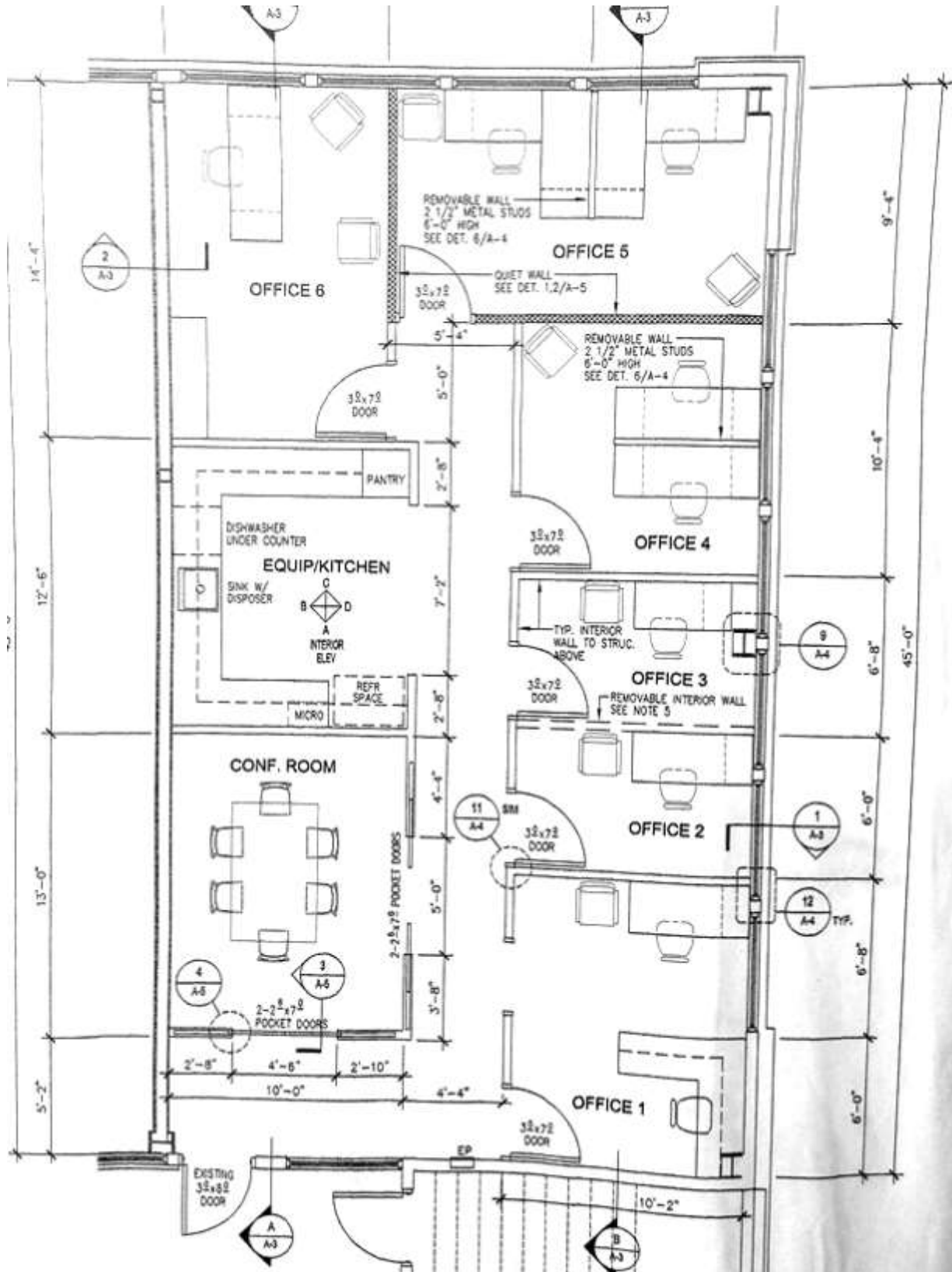
GRANT E. HOWE, CCIM R(B) and MARK A. SCHUSTER, R(S)

2145 Wells Street #105 Wailuku, HI 96793 | (808)244-2200 OFFICE | (808)442-1195 FAX

www.mauibiz.com | ghowe@mauibiz.com | mschuster@mauibiz.com E-MAIL



Floor Plan



GRANT E. HOWE, CCIM R(B) and MARK A. SCHUSTER, R(S)

2145 Wells Street #105 Wailuku, HI 96793 | (808)244-2200 OFFICE | (808)442-1195 FAX

www.mauibiz.com | ghowe@mauibiz.com | mschuster@mauibiz.com E-MAIL



Tax Map



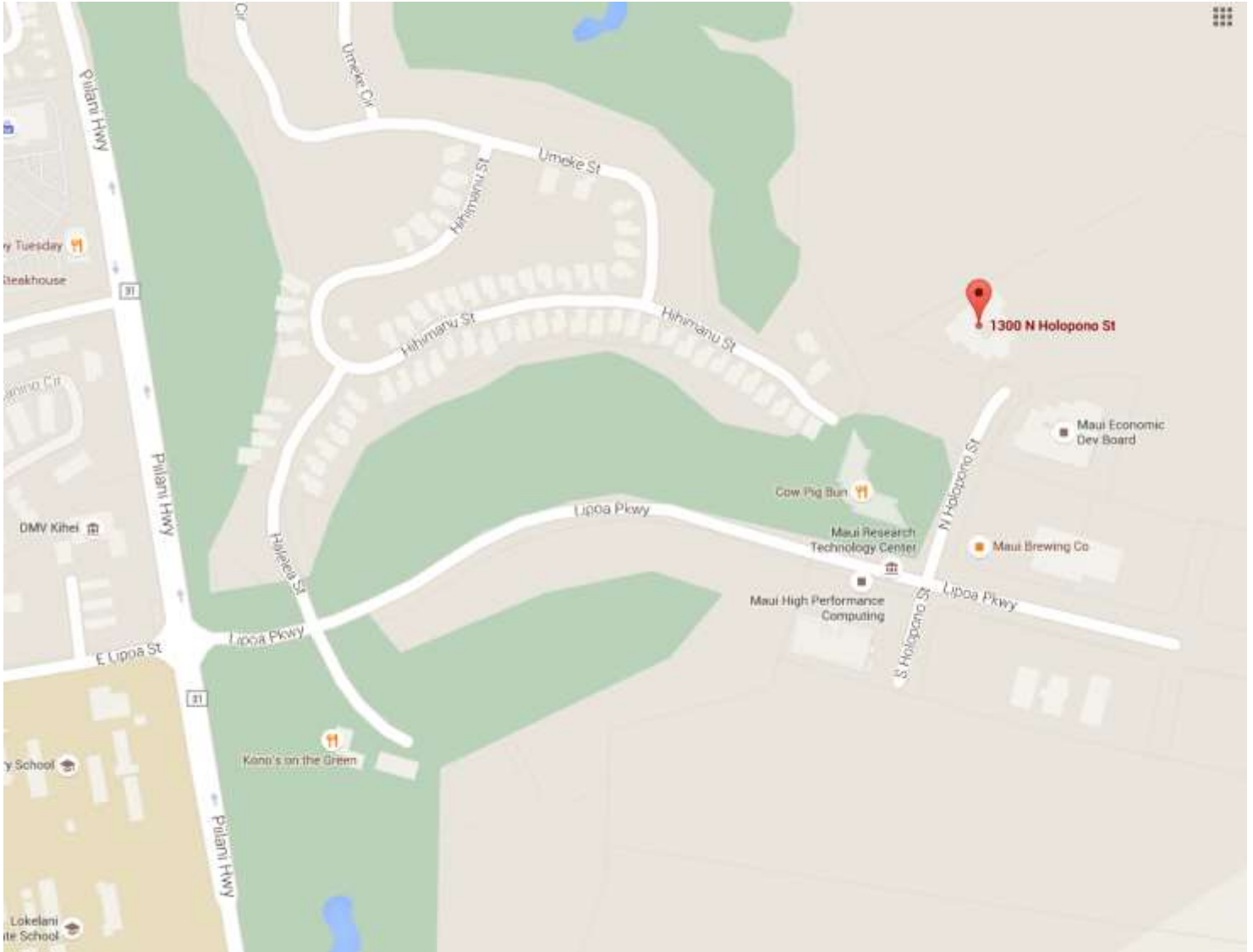
GRANT E. HOWE, CCIM R(B) and MARK A. SCHUSTER, R(S)

2145 Wells Street #105 Wailuku, HI 96793 | (808)244-2200 OFFICE | (808)442-1195 FAX

www.mauibiz.com | ghowe@mauibiz.com | mschuster@mauibiz.com E-MAIL



Street Map



GRANT E. HOWE, CCIM R(B) and MARK A. SCHUSTER, R(S)

2145 Wells Street #105 Wailuku, HI 96793 | (808)244-2200 OFFICE | (808)442-1195 FAX

www.mauibiz.com | ghowe@mauibiz.com | mschuster@mauibiz.com E-MAIL

