

For Sale – Fee Simple 8,771 Sq. Ft. Retail, Showroom, Warehouse Facility

PRICE REDUCED!



401 Hookahi Street
Units 13—21
Wailuku Maui Hawaii

Exclusively offered For Sale by

GRANT E. HOWE, CCIM R(B) and GREG SHEEHAN, R(PB)



**COMMERCIAL PROPERTIES
OF MAUI**

2145 Wells Street #105 Wailuku, HI 96793

(808)244-2200 OFFICE | (808)442-1195 FAX

www.mauibiz.com | ghowe@mauibiz.com | gsheehan@mauibiz.com E-MAIL



Individual
Member

401 Hookahi Street Units 13—21



Wailuku, Maui, Hawaii

PRICE	\$2,200,000	\$1,987,000 FS
BUILDING AREA		8,771 SQ FT
PRICE/SQ FT	\$250.00	\$226.54
ADDRESS	401 Hookahi Street Units 13—21	
TMK	(2) 3-4-044-019	
CPR	0013, 0014, 0015, 0016, 0017, 0018 0019, 0020, 0021	
ZONING	M-1 Light Industrial	
REAL PROPERTY TAXES	\$7,067.28 annually	
CAM (2016)	\$1,886.47 monthly	
PARKING	14 reserved stalls on-site	

3% Commission to Cooperating Brokers.

The information contained herein comes from sources deemed reliable, but no warranties or guarantees as to the accuracy of the information should be construed.

Bulk sale of 9 contiguous commercial condos consisting of 8,771 sq.ft. of retail/showroom, industrial warehouse space.



COMMERCIAL PROPERTIES
OF MAUI

GRANT E. HOWE, CCIM R(B) AND GREG SHEEHAN, R(PB)

2145 Wells Street #105 Wailuku, HI 96793 | (808)244-2200 OFFICE | (808)442-1195 FAX

www.mauibiz.com | ghowe@mauibiz.com | gsheehan@mauibiz.com E-MAIL

Property Photos



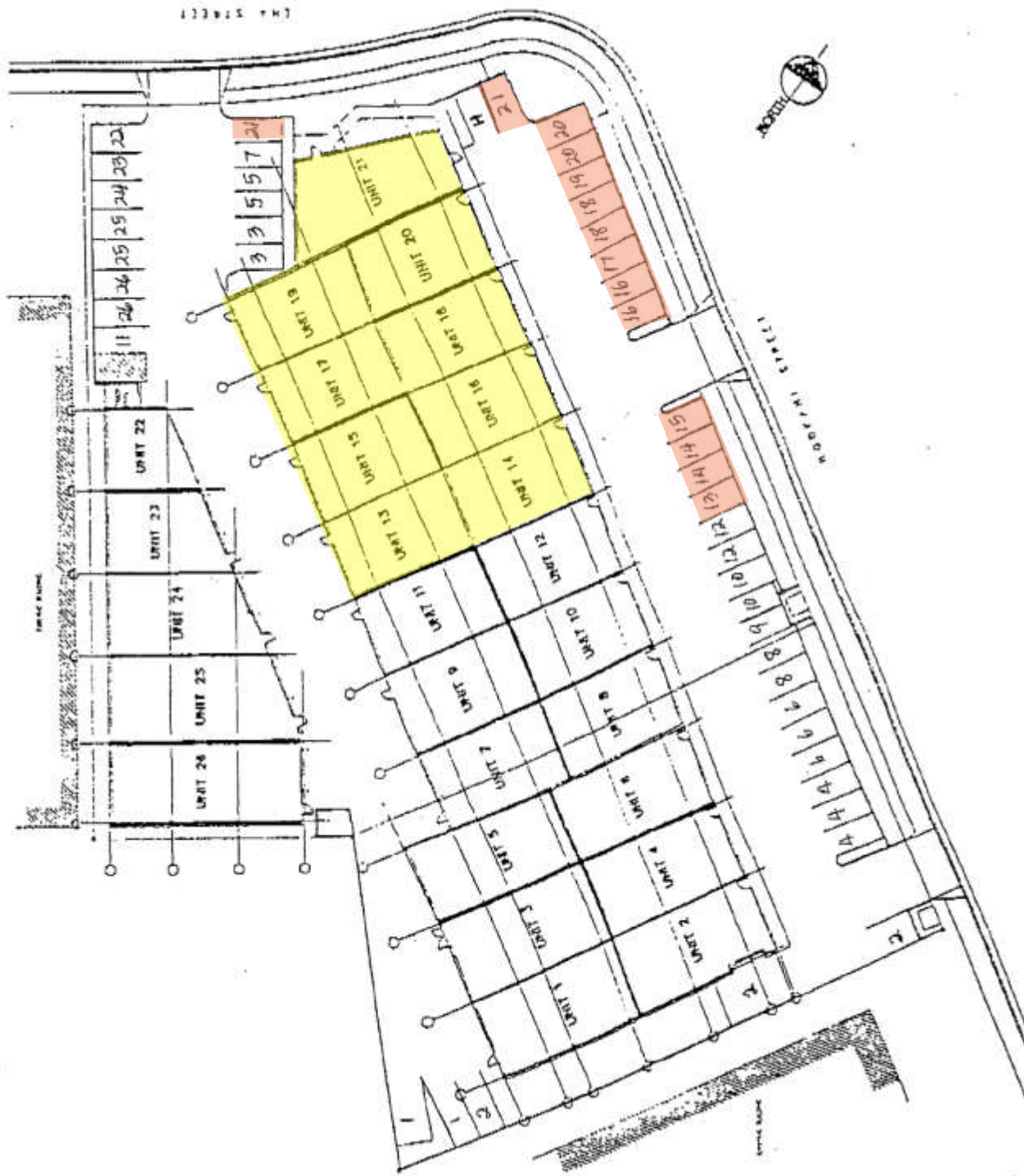
GRANT E. HOWE, CCIM R(B) AND GREG SHEEHAN, R(PB)

2145 Wells Street #105 Wailuku, HI 96793 | (808)244-2200 OFFICE | (808)442-1195 FAX

www.mauibiz.com | ghowe@mauibiz.com | gsheehan@mauibiz.com E-MAIL



Site Plan



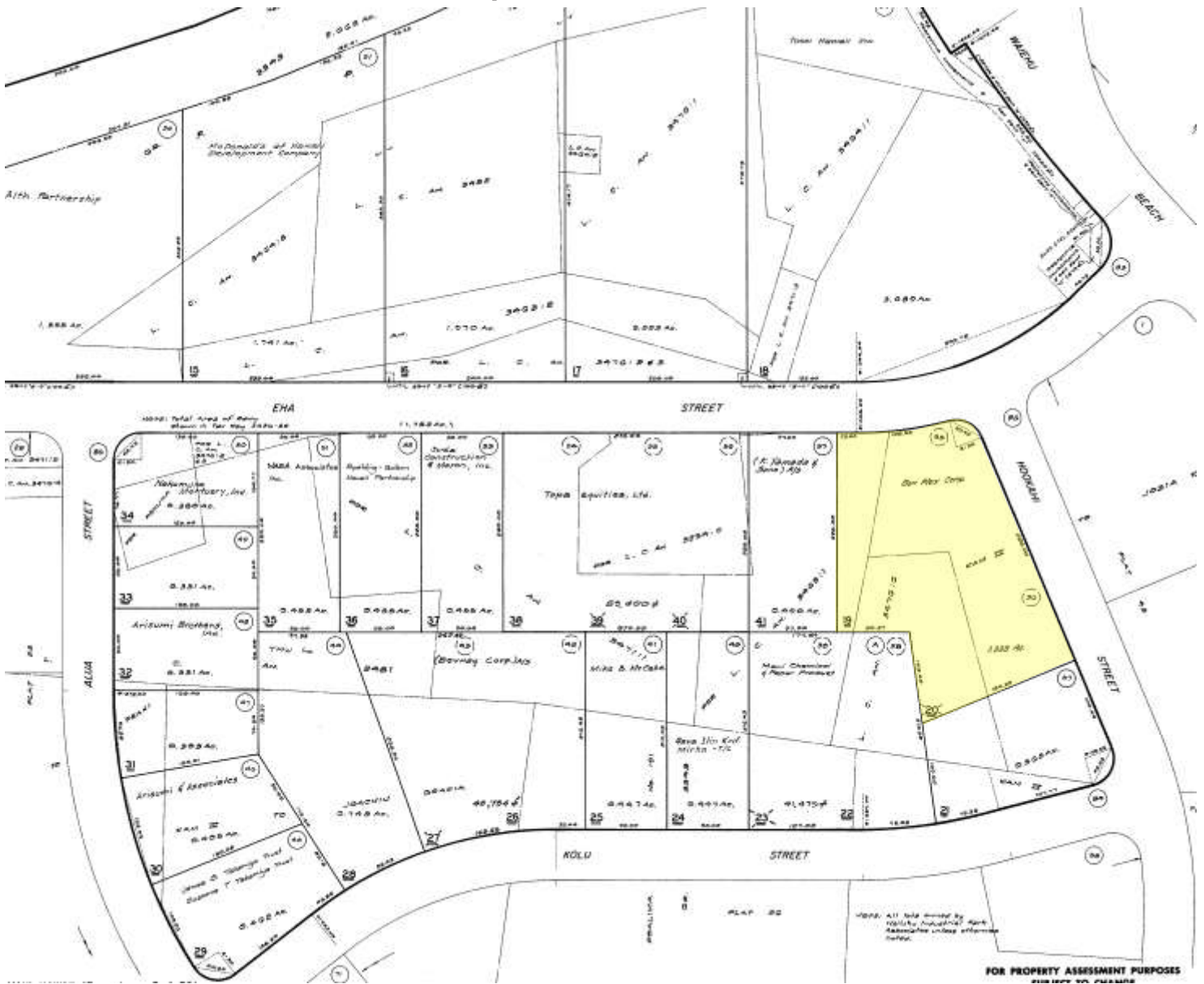
GRANT E. HOWE, CCIM R(B) AND GREG SHEEHAN, R(PB)

2145 Wells Street #105 Wailuku, HI 96793 | (808)244-2200 OFFICE | (808)442-1195 FAX

www.mauibiz.com | ghowe@mauibiz.com | gsheehan@mauibiz.com E-MAIL



Tax Map



GRANT E. HOWE, CCIM R(B) AND GREG SHEEHAN, R(PB)

2145 Wells Street #105 Wailuku, HI 96793 | (808)244-2200 OFFICE | (808)442-1195 FAX

www.maubiz.com | ghowe@maubiz.com | gsheehan@maubiz.com E-MAIL



Street Map



GRANT E. HOWE, CCIM R(B) AND GREG SHEEHAN, R(PB)

2145 Wells Street #105 Wailuku, HI 96793 | (808)244-2200 OFFICE | (808)442-1195 FAX

www.mauibiz.com | ghowe@mauibiz.com | gsheehan@mauibiz.com E-MAIL

